



MHN-TD

MHN-TD 150W/842 RX7s 1CT/12

双端石英金属卤化物灯

安全提示

- Use only in totally enclosed luminaire, even during testing (IEC61167, IEC 62035, IEC60598)
- The luminaire must be able to contain hot lamp parts if the lamp ruptures
- Control gear must include end-of-life protection (IEC61167, IEC 62035)
- A lamp breaking is extremely unlikely to have any impact on your health. If a lamp breaks, ventilate the room for 30 minutes and remove the parts, preferably with gloves. Put them in a sealed plastic bag and take it to your local waste facilities for recycling. Do not use a vacuum cleaner.

产品数据

运营和电气	
功耗	155.0 W
电压 (标称)	98 V
电压 (标称)	98 V
基本信息	
底盖	RX7S [RX7s]
操作位置	P45 [并行 +/-45D 或水平 (HOR)]
测量测量参考	Sphere
照明科技	
颜色代码	842 [CCT of 4200K]
光通量	12,500 lm
颜色名称	冷白色 (CW)
色度坐标 X (标称)	0.371
色度坐标 Y (标称)	0.366
相关色温 (标称)	4200 K
光效 (额定)(最低)	73 lm/W

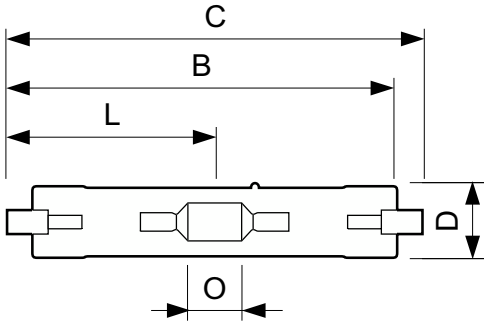
光效 (额定)(标称)	81 lm/W
显色指数 (CRI)	81
控制调光	
可调光	否
机械和壳体	
灯泡外观	透明
灯泡外形	TD
应用	
汞 (Hg) 含量 (最高)	12.3 mg
汞 (Hg) 含量 (标称)	12.3 mg
能耗 kWh/1000 h	155 kWh
EPREL 注册号	473,320
产品参数	
Full EOC	871829121536300

MHN-TD

订单产品名称	MHN-TD 150W/842 RX7s 1CT/12
订购代码	928076505190
SAP 计算器 - 每个包中的数量	1
计算器 - 每个外包装箱中的包数	12
材料编号 (12NC)	928076505190

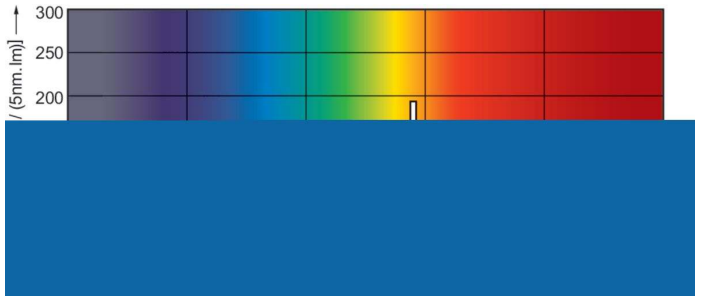
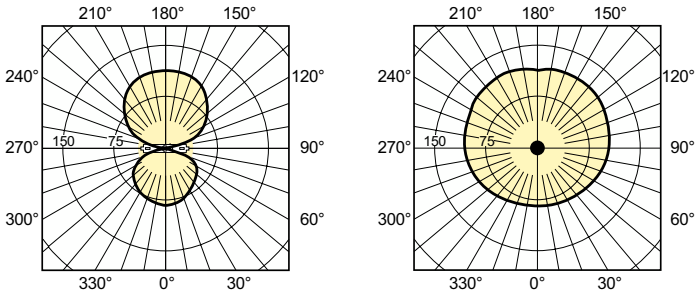
完整的产品名称	MHN-TD 150W/842 RX7s 1CT/12
EAN/UPC - 案例	8718291215370

二维绘图



Product	D (max)	D	O	C (max)
MHN-TD 150W/842 RX7s 1CT/12	23.0 mm	0.89 in	17.8 mm	135.4 mm

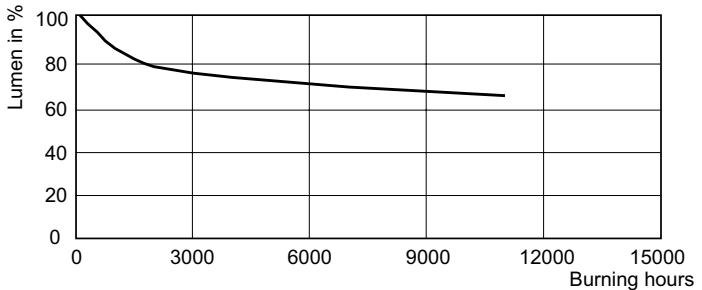
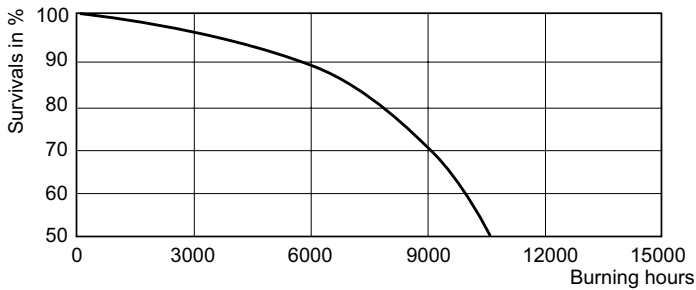
光度数据



Light Distribution Diagram - MHN-TD 150W/842 RX7s 1CT/12

Spectral Power Distribution Colour - MHN-TD 150W/842 RX7s 1CT/12

寿命



Life Expectancy Diagram - MHN-TD 150W/842 RX7s 1CT/12

Lumen Maintenance Diagram - MHN-TD 150W/842 RX7s 1CT/12

